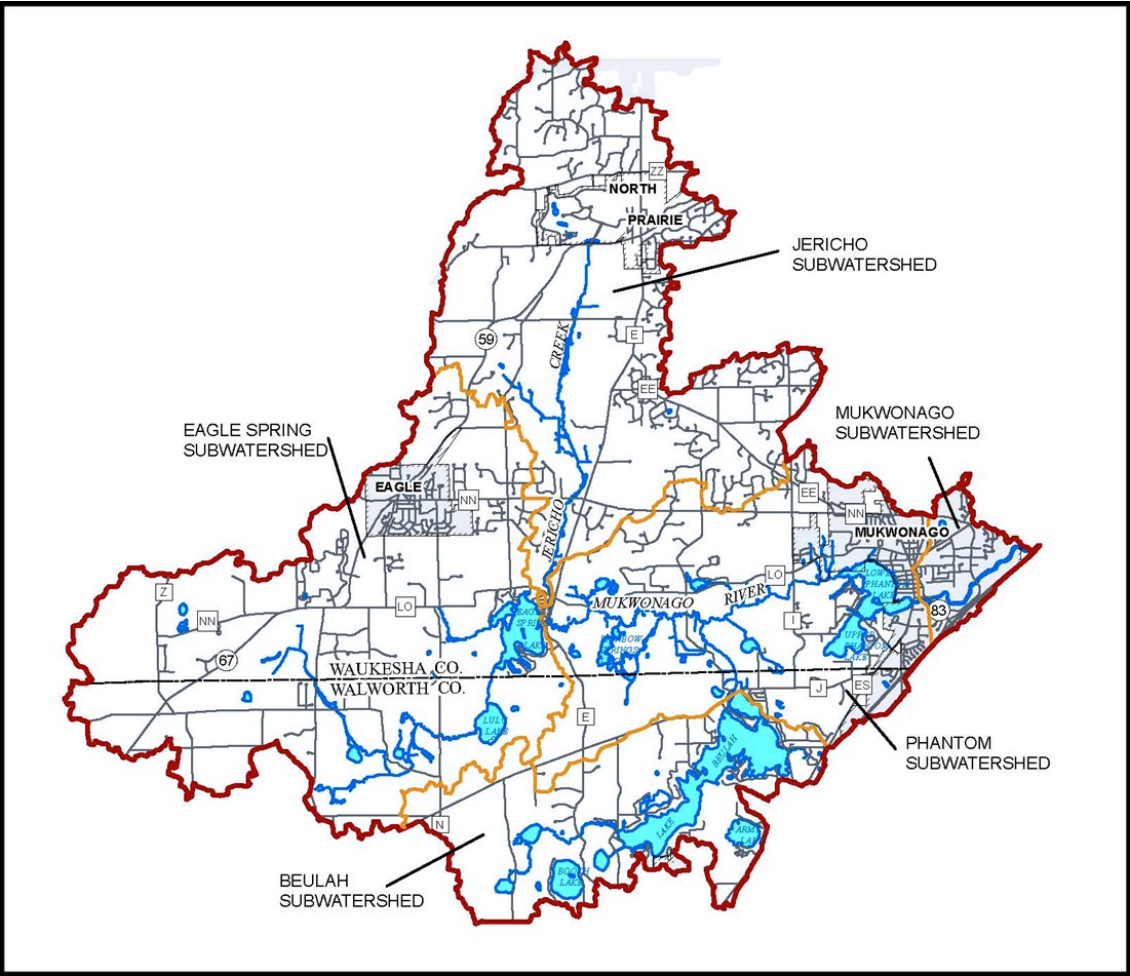


Friends of the Mukwonago River  
P.O. Box 21  
Eagle, WI 53119



**Mukwonago River Watershed**  
*one of four “Last Great Places” in Wisconsin*



Congratulations, you are a resident of one of the most pristine watersheds in Wisconsin: The Mukwonago River Watershed. You have received this mailing because you are fortunate enough to live or own property in this jewel in the midst of Southeast Wisconsin.

Friends of the Mukwonago River works to protect this watershed for the benefit of this unique ecology, land owners and the public and we hope that you will assist us. Your actions and interactions with the land and water have an impact on watershed quality. Please help preserve it.

**Event Registration & FoMR Membership**



**Saturday, October 12, 2013** (Please register before October 7)

\$15 per person, \$10 Friends members (lunch provided—if registered by October 7)

Name: \_\_\_\_\_ # attending: \_\_\_\_\_

**YES!! I want to become a Member of Friends of the Mukwonago River.**

Address: \_\_\_\_\_

\_\_\_\_\_ Email: \_\_\_\_\_

**Membership levels** (please circle one)

Senior/student \$10    Friend \$25    Organization \$40    Corporate \$50

\$ enclosed \_\_\_\_\_

**Mail to:** Friends of the Mukwonago River, P.O. Box 21, Eagle WI 53119





## Watershed Awareness Weekend

October 12 & 13, 2013

### You're Invited

#### **Saturday, October 12th**

**Registration \$15 (Friends' Members \$10 ) - lunch provided (if registered by October 7)**

**To register: mail form on back cover by October 7th**

9 a.m. to 3 p.m.— Four, 50-minute information/education sessions

Camp Alice Chester, N8651 Townline Road, East Troy, WI 53120

- *Restoration of Southern Kettle Moraine Waters (former Rainbow Springs)*
- *Rain Gardens and Rain Barrels: Overcoming impervious Surfaces*
- *Invasive plants in your watershed*
- *Mukwonago River fish & fishing*

Details on speakers/presenters & schedule at <http://mukwonagoriver.org/>

#### **Sunday, October 13th** (Free Event)

1 p.m. to 3 p.m. Guided hike of Southern Kettle Moraine Waters (former Rainbow Springs). See the restoration of the property and learn about what is still to come at these new public recreation lands. Enter from County Highway LO, east of County Highway E.

## Southern Kettle Moraine Waters (former Rainbow Springs)

This property underwent major restorative changes in 2012 and 2013. Wisconsin Department of Natural Resources staff were very active on many aspects of the property. "Demolition of most structures was completed in 2012," said Paul Sandgren, forest superintendent of the Southern Unit of the KMSF. "The Pro-shop and ice skating warming cabin remain, with replaced roofs and underground electric."

The Waukesha County section of the property opened to the public November 10, 2012. A parking lot at the entrance on County Highway LO was installed for use by hikers, hunters and fishermen, and others on foot. Horses, bicycles and motor vehicles are not permitted. The entrance road, the bridge and culvert remain at this time. Because of its poor condition, the covered bridge over the river was removed which opened a view of the river. The view was further improved when the South-eastern Wisconsin Chapter of Trout Unlimited removed brush.

Under a grant sponsored by The Kettle Moraine Natural History Association and the Southeast Wisconsin Fox River Commission, work has begun on culvert removal. The project involves restoring the portion of the Mukwonago River that was changed to create the golf course in the 1960's. Benjamin Heussner, fisheries biologist, reports, "A cooperative effort to improve habitat and navigability is well on its way with two culverts removed in fall of 2012. A habitat evaluation was completed on the river in summer 2012 that helped develop the culvert removal plan. A mussel survey was completed and native mussels were transplanted upstream of the worksite prior to the removal of the two culverts. A fisheries electrofishing survey was completed where species diversity and abundance was documented prior to river restoration efforts. Brush bundles, stream mapping, garbage clean up, water quality monitoring and exotics removal was performed in cooperation with Nature's Classroom Institute, SE Wisconsin Chapter of Trout Unlimited and WDNR. This work is the beginning of a large scale restoration effort on the former Rainbow Springs property that will continue with the removal of five more culverts in 2013, weather permitting. " Most culverts have been removed as of this summer.

The four grant parcels totaling 239 acres falling under the North American Wetlands Conservation Act (NAWCA) have been surveyed and legal descriptions developed. These four areas will be encumbered with NAWCA grant restrictions and will be managed for wild-life habitat, particularly wetland habitat.



The WDNR has begun the master plan process which will continue for eighteen months with stakeholder and public input beginning in 2013. This very comprehensive process will define a collective vision for the lands and waters of the SKM Waters and Lulu Lake Natural Area. Jeff Prey, senior planner, has been laying groundwork for this Plan with guidance from WDNR Endangered Resources, the Mukwonago River Watershed Protection Plan and others, developing high level milestones and target dates for completion. Mapping, site inventories, and other background

material and information have been created and documented in order to understand the Plan area and what preservation requirements exist, as well as what areas might be best suited for the many uses proposed. WDNR has a strategy for public involvement which will begin soon. "There will be opportunities for all entities and individuals to weigh in on the use and restoration of the property," noted Sandgren.

**Important Note:** Friends of the Mukwonago River expect to take an active interest in the planning process for the Southern Kettle Moraine Waters property. We hope to have your participation and input as the timeline for the process becomes known. Please watch for updates from WDNR and from Friends. This is a very important property that will greatly impact the watershed depending on how it is managed and what uses are allowed. Updates will be available after the September 17, 2013 public open house.



John Wesley Powell, scientist geographer, “ a watershed is that area of land, a bounded hydrologic system, within which all living things are inextricably linked by their common water course and where, as humans settled, simple logic demanded that they become part of a community.”

## Watershed Education

FoMR is pleased to present a weekend of learning and exploration on October 12th & 13th, 2013. Educational sessions will provide information for landowners and recreational users of the Mukwonago River watershed. Our hope is to inform and initiate protection and restoration activities that will improve the state of our ecological communities. We are also working with WDNR to provide access and information about the Mukwonago River Unit of the Southern Kettle Moraine State Forest.

This community event compliments existing Friends’ efforts to educate youth about the watershed through a Wisconsin Environmental Education Board (WEEB) grant. Bringing together environmental educators from YMCA Camp Edwards, Timber-Lee and Nature’s Classroom Institute, and local schools, Friends has undertaken an 18 month process of developing watershed and stewardship based curriculum, building river models for use in classrooms, developing a service-learning database that brings together public and private land management activities with educational opportunities and much more.

Our goal is to educate residents, land owners, local governments and businesses owners through community outreach using targeted events and educational tools: printed materials, presentations and on-line resources that have been informed by land managers, SEWRPC, scientific research, lake management district boards, educators and others. We work with lake districts and other non-governmental partners to reach constituents to foster interest in the watershed and its protection.

## Contact Us

Visit us at [www.mukwonagoriver.org](http://www.mukwonagoriver.org) to learn more and become a member

Friends of the Mukwonago River, Inc.

P.O. Box 21

Eagle, WI 53119

Volunteer: We have many volunteer opportunities—Education, Protection & Restoration, Outreach & Communications, Events, etc. We would love your help!

Email: [friendsofthemukwonagoriver@yahoo.com](mailto:friendsofthemukwonagoriver@yahoo.com)



### What’s so special about the Mukwonago River?

#### Fish and freshwater mussel diversity:

**The Mukwonago River is home to over 50 different species of fish.** For a stream of this size, over 20 species would be considered quite diverse. Only much larger systems like the Wisconsin and the Mississippi have comparable levels of fish diversity.

**10 of the state’s 11 species of Sunfish (including the threatened Longear Sunfish) live in the Mukwonago River.** It is the only stream in Wisconsin where this occurs.

**All three species of Killifish (or Topminnows) found in Wisconsin, including the endangered Starhead Topminnow, live in the Mukwonago River.** This is the only stream in the state where this occurs.

**The Mukwonago supports numerous species of Shiners and Darters,** fish species that are not necessarily unique, but indicators of good water quality and habitat.

**The Mukwonago River contains 15 different species of freshwater mussels, including the endangered Rainbow Shell and the threatened Slippershell and Ellipse mussels.** Mussels are the most threatened family of animals in North America, due principally to water quality deterioration in most of the nation’s freshwater bodies.

#### High quality, diverse wetlands and high rates of groundwater recharge:

**The Mukwonago River watershed features a diverse and extensive system of intact wetlands that help support its high water quality and species diversity,** explaining why the Mukwonago River is known as one of the most biologically diverse and highest quality rivers in the state.

**Due to the glacial soils found throughout most of the watershed, combined with its being relatively undeveloped,** groundwater recharge rates in the watershed are significant. Much of the life described above relies heavily on the consistent inflow of cool groundwater for its survival. Human communities in the watershed also rely on the groundwater aquifers supplied by this recharge. Maintaining groundwater recharge is more important than ever.

#### Excellent overall ecosystem condition:

**Due to its excellent water quality, minimal level of disturbance, and diverse habitat types (particularly the abundant spring-fed wetlands),** the river also supports a high diversity of waterfowl, reptiles, amphibians, insects, aquatic plants, and wetland types. The Mukwonago, for example, supports one of the last and largest stands of wild rice in Southeastern Wisconsin.

**The challenge to protect the outstanding resources of the Mukwonago River in the face of recreational and development pressure can be met as we work collaboratively with our many partners. Tools and best practices exist for development design, storm water management, and land and water conservation that will serve to meet these objectives. Where appropriate, public and private land preservation can play a key role in protecting the natural heritage of the Mukwonago River watershed for the enjoyment of current and future generations. You have a large role in managing the health and diversity of the watershed.**





Friends of the Mukwonago River would like to thank the following area businesses and individuals for their generous sponsorships.



PROHEALTH CARE

Waldheim Park (John Macy and Sandi Brand)

Berg Corporate Interiors Charles and Heidi Miller  
 Farina Tree Care, Inc. Holtz Farms Kurt’s Country Porch  
 Mukwonago Family Dentistry

Anich’s Liquor FS Frontier Seasonal Services Warren Hanson, Sr.  
 Warren Hansen, P. E., Farris, Hansen, & Associates, Inc.

Please join us in our support of these businesses which help further our mission. Thank you.

### Please Donate and Become a Member

FoMR needs community support to ensure further success. We operate with a combination of membership dues, donations, event revenue, grants and program fees.

Ongoing success requires consistent financial support. We need your help to ensure we have the resources necessary to achieve long-term goals for watershed preservation.

Staff support, scientific study and partner collaborations are essential to allowing FoMR to continue to deliver education, outreach and advocacy; essential elements to protecting the Mukwonago watershed.

Our financial requirement to meet present needs and support the priorities of the FoMR 2011-2015 Strategic Plan is \$30,000 by the end of 2013.

Membership and donation information can be found at:

[www.mukwonagoriver.org](http://www.mukwonagoriver.org)



### What is the Mukwonago River Watershed?

The Mukwonago River watershed is one of four “Last Great Places” in Wisconsin. With very high quality water and diverse wetlands, it was selected in the early 2000’s as one of three focal sites of the Global Wetland Network. The Mukwonago River is home to over fifty species of fish, multiple species of rare freshwater mussels, an incredible diversity of wetlands, and some of the highest water quality in Southeastern Wisconsin.

### Who is Friends of the Mukwonago River?

The mission of the Friends of the Mukwonago River (FoMR) is to protect the Mukwonago River Watershed, its tributaries, lakes, wetlands and buffer zones through education, advocacy and the promotion of sound land use throughout the watershed.

FoMR works directly on behalf of the watershed and collaboratively with public and private organizations that have recognized the importance of preserving this ecosystem. The need for the preservation of this resource is clear and compelling; the Mukwonago River Watershed covers 74 square miles and encompasses 7 large and 7 small lakes, many miles of tributary streams and the Mukwonago River. Together these waterways, wetlands, riparian zones and forested areas provide the environmental backbone for our region.

### FoMR has focused on 4 primary areas during our 14 years of service:

**Conservation Initiatives:** Utilizing the best in science and technology we seek to analyze, understand and protect our watershed. The watershed is studied by citizens and scientists alike as we continue to monitor its health and preserve its pristine qualities.

**Watershed Protection:** Demonstration projects and watershed education highlights the need to protect and preserve the habitats, animals and ecology of the watershed. The FoMR Education Consortium brings together land managers and environmental educators to educate youth and adults about the benefits of the watershed.

**Advocating for Protection, Preservation and Restoration:** With our partners we support legislative protections for our watershed, work with local governments to educate their constituents and teach best practices for watershed protection.

**Promotion of Sound Land Use:** We work with local municipalities, developers, landowners and stakeholders to ensure that planning and zoning efforts include river and watershed protection.