



May is National *Watershed Awareness* Month

## A WATERSHED EVENT

The residents of the *Mukwonago River Watershed* are invited to a pancake breakfast on Lake Beulah on June 3rd, 2012 to celebrate our very special watershed and meet fellow residents. Learn more about the qualities that make this watershed so unique and worth protecting for future generations at this event sponsored by the Friends of the Mukwonago River, Inc., a non-profit volunteer entity.

**The Nature Conservancy has designated the Mukwonago River watershed one of four “Last Great Places” in Wisconsin. Because of its high quality waters and diverse wetlands, the Mukwonago River watershed was selected in the early 2000’s as one of three focal sites of the Global Wetland Network. The other two sites are along the Amazon River and the Great Salt Marsh. The Mukwonago River is the highest quality waterway in SE Wisconsin.**

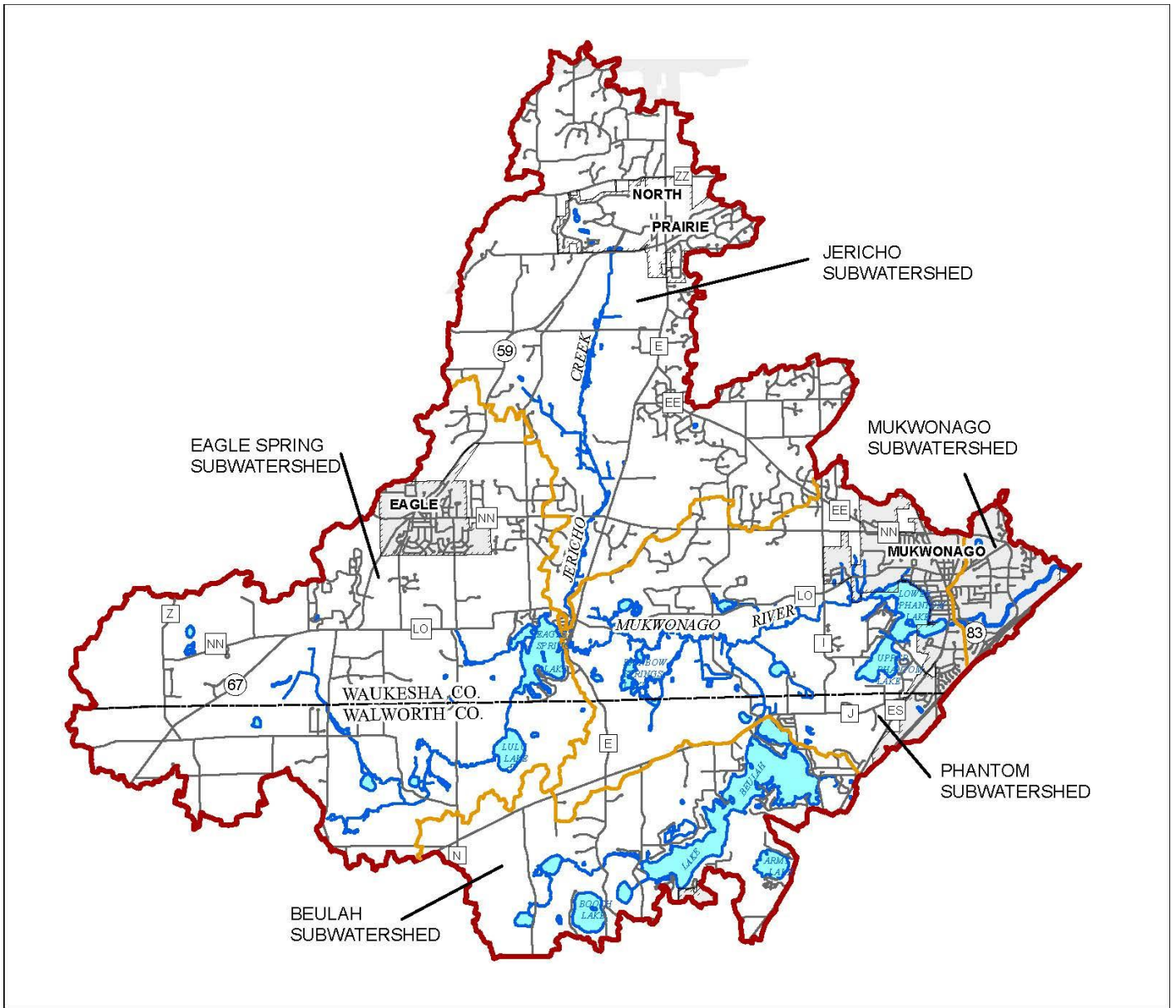
How can we protect our watershed going forward? Are there current threats to its quality? How will the Mukwonago River Unit of the Southern Kettle Moraine Forest (former Rainbow Springs) impact the watershed? What can you do to help keep its pristine condition?

Locate your property on the watershed map on the back. We look forward to meeting you.

- Who:** You, your family and your friends.
- What:** A pancake breakfast with sausage, bacon, fruit and beverages. \$7.00/person
- When:** Sunday, June 3, 2012. 8 a.m. - 10 a.m.
- Where:** Lake Beulah Yacht Club, N9220 East Shore Road, East Troy, WI 53120

The mission of the Friends of the Mukwonago River is to protect the Mukwonago River and its associated watershed ecosystems by way of education, advocacy, and promotion of sound land use throughout the watershed. We are a 501(c) (3) non-profit organization and your donations are tax deductible to the extent allowable by law.

John Wesley Powell, scientist geographer, stated that a watershed is: "that area of land, a bounded hydrologic system, within which all living things are inextricably linked by their common water course and where, as humans settled, simple logic demanded that they become part of a community."



GENEROUS DONATIONS FROM THE FOLLOWING ENTITIES SPONSORED OUR COSTS FOR THIS EVENT. PLEASE HELP US THANK THEM FOR THEIR SUPPORT.



**Bret Achtenhagen's Seasonal Services, Ltd. Mukwonago Family Dentistry.**

Holtz Farms Patrick McAdams Waldheim Park Wildflour Bakery

Warren Hansen, P.E. Farris, Hansen & Associates, Inc. Eagle Springs Pub, Inc. Warren Hansen, Sr.